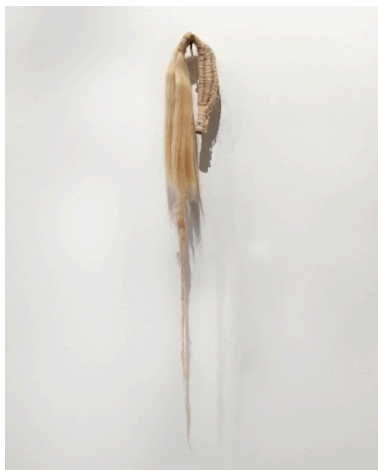


FOR IMMEDIATE RELEASE
MEDIA CONTACT: SHANI K PARSONS | INFO@TYPOLOGY.CA



photo: Thomas Blanchard



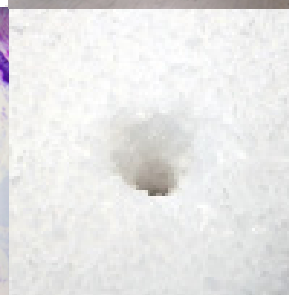
featuring

Mary
GRISEY
Faye
MULLEN
Jérôme
NADEAU
Deborah
WANG



curated by

Noa
BRONSTEIN



Loose Ends

JANUARY 14 — MARCH 6, 2016
Opening January 14 at 5 pm

Each decay is a form of transformation into other living things, part of the great rampage of becoming that is also unbecoming. It is cruel, it is death, and it is also life, degeneration and regeneration, for nearly all living things live by the death of other things.

—Rebecca Solnit

TYPOLOGY is pleased to present *Loose Ends*, curated by Noa Bronstein and featuring sculpture, video, and photo-based works by Mary Grisey, Faye Mullen, Jérôme Nadeau, and Deborah Wang.

Exploring the spaces between states of being, the exhibition traces the cyclical and vernacular places between appearance and disappearance, presence and absence, construction and deconstruction. Moving between and within, a new kind of relic is realized, one that is both past and present, confined only to the metamorphic.

Loose Ends will be accompanied by a catalogue with curatorial essay by Noa Bronstein and original writings by each artist, plus full documentation of the exhibition. Events will include a talk and tour with the curator and artists on opening night, as well as workshops and other events currently in development; visit our website at www.typology.ca for more information.

images, left to right: Mary Grisey, Remains of the Ephemeral III (detail), 2014; Jérôme Nadeau, Untitled from the RUINS series, 2012–ongoing; Faye Mullen (top), à jamais (still), 2011; Deborah Wang (bottom), Drip (still), 2013

TYPOLOGY

180 SHAW ST / SUITE 302 / ARTSCAPE YOUNGPLACE / TORONTO / ONTARIO / M6J 2W5 / WWW.TYPOLOGY.CA / INFO@TYPOLOGY.CA
REGULAR EXHIBITION HOURS: FRI–SUN 12–5 PM AND BY APPOINTMENT

Mary Grisey is a sculptural installation artist based in Toronto. She received an MFA in Visual Arts at York University and has exhibited in the US and Canada. Grisey was recently awarded a fellowship to the Vermont Studio Center for Spring 2016.

Faye Mullen makes work which is informed by a sculptural sensibility combining elements of performance, site, sound, light and image. She received her master's from the University of Toronto and has participated in residencies and exhibitions both nationally and internationally.

Jérôme Nadeau is currently based in Montreal where he is pursuing his MFA with a concentration in photography at Concordia and also attended the Photography MA program at the Valand Academy in Sweden. He has exhibited his photo-based works widely in Canada, as well as in Europe and the US.

Deborah Wang holds a Master of Architecture from the University of Waterloo and an MFA from OCAD University. Through her diverse practice, she has curated exhibitions, taught design studio, and exhibited her own art and design in Toronto and abroad. Currently Wang is the Creative Director of the Toronto Design Offsite Festival and a senior designer for superkül.

Noa Bronstein is a researcher and curator who has produced exhibitions throughout Toronto and has contributed to publications including *esse art+criticism* and *C Magazine*. Bronstein is currently the Executive Director of Gallery 44 Centre for Contemporary Photography.

ABOUT TYPOLOGY

CONTACT: SHANI K PARSONS / INFO@TYPOLOGY.CA



OUR MISSION

Providing opportunities for curators and artists to mount fully realized exhibitions within a critical framework, TYPOLOGY is a not-for-profit initiative which seeks to advance curatorial inquiry and build curatorial community at the local, national, and international levels. Through a wide-ranging annual program of exhibitions supported by the production of original publications, editions, and related events, TYPOLOGY is an open platform for diverse curatorial and artistic practices and perspectives, and a forum for the exchange of ideas on exhibition-making as a way to engage and inform audiences from all walks of life.

VISIT US!

Our yearly program of exhibitions and events runs from September through June. When exhibitions are on, we are open Friday–Sunday 12–5 pm and by appointment. Please visit www.typology.ca for current information and hours.

Subscribe for updates + invites at www.typology.ca/blog, or follow us on Facebook (facebook.com/TYPOLOGY), Twitter (@TypologyCA), Tumblr (typology.tumblr.com), or Instagram (instagram.com/typologica) for the latest happenings.

Exhibitions

As an intimate venue for exhibitions, TYPOLOGY emphasizes highly focused art and curatorial projects with an eye toward stimulating cross-disciplinary dialogue between artists, art forms, ideas, images, objects, and environments.

Editions

Through our publishing program, each show is documented in a professionally designed exhibition catalogue with original curatorial writing. Affordable limited-edition prints are also produced in collaboration with exhibiting artists as an invitation to collectors of all ages.

Events

Through an inclusive and varied program of events, TYPOLOGY seeks to enrich the exhibition experience and encourage active audience participation in our projects and programming.

[TYPOLOGY accepts curatorial proposals and artist's portfolios on a rolling basis. Submission guidelines for curators and artists can be found on our the home page of our website.](#)

TYPOLOGY

180 SHAW ST / N^o 302 / ARTSCAPE YOUNGPLACE / TORONTO / ONTARIO / M6J 2W5 / WWW.TYPOLOGY.CA / INFO@TYPOLOGY.CA